

CLPHA



HOUSING IS SUMMIT 2022

MAY 18–MAY 19, 2022

NATIONAL HOUSING CENTER
1201 15TH ST. NW
WASHINGTON, DC, 20005



What is HOUSING IS?

Housing Is, an Initiative led by the Council of Large Public Housing Authorities, was founded in 2015 to break down silos between different systems and sectors to forge partnerships to improve life outcomes for families living in assisted housing.

- *Housing Is* creates collaboration across health, education, and housing sectors through shared goals, focused resources, and coordinated efforts.
- *Housing Is* strengthens our collective ability to serve low-income individuals and families effectively and efficiently.

How Does *Housing Is* Help You?

Housing Is can provide assistance in a range of services including matchmaking to organizations with similar missions, providing technical assistance, and participating in pioneering research and cohorts.

Join the *Housing Is* Working Group

The *Housing Is* Working Group is a collective of public housing authorities, and non-profit organizations working in health, education and housing sectors coming together monthly via virtual meetings and other forums to discuss cross-sector work, challenges and successes. To join the Working Group, please email Abra Lyons-Warren, director of cross-sector initiatives at CLPHA, at abra@clpha.org or Camille Anoll, health policy manager at canoll@clpha.org.

Take Advantage of the *Housing Is* Clearinghouse

The *Housing Is* Clearinghouse is an online hub for promoting effective programs and sharing innovative ideas. For more information, check out the flyer in your conference folder.

housingis.org

Visit the Summit Lounge sponsored by KeyBanc, all day!



SCHEDULE AT-A-GLANCE

WEDNESDAY, MAY 18 MAKING CHANGE ACROSS THE COUNTRY

8:30am	Breakfast
9:30am	Opening Remarks
10:00am	Breakout Sessions: Data & Research <ul style="list-style-type: none"> • PHA Partnerships Improving Communities and Public Safety • Realizing Housing Stability: Partnership Opportunities with the Disability and Aging Networks • Working with School Districts and School Data in the Affirmatively Furthering Fair Housing Process
11:15am	Break
11:30am	Keynote FCC Commissioner Geoffrey Starks
11:40am	Plenary Income Supports
12:40pm	Lunch
1:40pm	Keynote Congresswoman Alma Adams
1:45pm	Plenary Maternal Health Equity
2:45pm	Break
3:00pm	Breakout Sessions: Funding <ul style="list-style-type: none"> • We Ain't Gonna Program Our Way Out of This, Folks: Investing in Systems Transformation to Improve Economic Mobility • Care Coordination: A Sustainable Approach to Addressing the Social Determinants of Health • Meeting Families' Needs: Including Child Care in Housing Developments
4:15pm	Reception brought to you by YARDI

THURSDAY, MAY 19 ACTION IN OUR COMMUNITIES

8:30am	Breakfast
9:30am	Welcome Back Remarks
9:45am	Breakout Sessions: Resident-Focused Initiatives <ul style="list-style-type: none"> • Beyond Books: Deepening Community Impact through Housing Authority and Library Partnerships • Building Economic Opportunity Through Health During the Pandemic and Beyond • Designing and Implementing Programs with Residents and Families at the Center
11:00am	Break
11:15am	Plenary Housing as a Platform to Support Early Learning
12:15pm	Lunch Meeting of the Public and Affordable Housing Professional Summer Learning Community
1:30pm	Breakout Sessions: Case Studies <ul style="list-style-type: none"> • Bridging the Digital Divide: Advocacy and Public-Private Partnerships • Learnings from Cross-Sector Partnerships to Expand Supportive Housing • Taking FSS to Scale – Lessons from Compass' Partnerships in Boston and Cambridge
2:45pm	Closing Remarks
3:00pm	Adjourn

WEDNESDAY, MAY 18

MAKING CHANGE ACROSS THE COUNTRY

8:30am–9:30am

Breakfast

9:30am–9:50am

PLENARY

Auditorium

Opening Plenary: Welcome to the 2022 Summit

Abra Lyons-Warren, Director of Cross-Sector Initiatives, CLPHA

Sunia Zatterman, Executive Director, CLPHA

Jeffery K. Patterson, CLPHA Board President; CEO,
Cuyahoga Metropolitan Housing Authority

9:50am–10:00am

Remarks from Our Summit Sponsors

Auditorium

Anthony Pass, KeyBanc Capital Markets, Senior Vice President

Jeanette Porter, Sales Team Lead, Yardi



10:00 am–11:15am

BREAKOUT SESSIONS: DATA & RESEARCH



PARTNERSHIPS TRACK

Auditorium

PHA Partnerships Improving Communities and Public Safety

This session will feature partnerships between public housing authorities and criminal justice system stakeholders that are working together to increase housing access to people with conviction histories, ensure public safety, and improve PHA communities. Hear from PHAs in Michigan, New York, and Washington State that are changing policies and implementing reentry programs, as well as the Vera Institute of Justice, an organization that is supporting this effort nationally.

John Bae, Program Manager, Vera Institute of Justice

Sandra Henriquez, CEO, Detroit Housing Commission

Yolanda Johnson-Peterkin, Chief of Housing Community Activities,
New York City Housing Authority

Aley Thompson, Rental Assistance Director, Tacoma Housing Authority



HEALTH & HOUSING TRACK

Room A/B

Realizing Housing Stability:

Partnership Opportunities with the Disability and Aging Networks

The Administration for Community Living's Aging and Disability Network is a multifaceted service infrastructure for older adults and people with disabilities so they can find housing and obtain services like chore assistance, delivered meals, and transportation. By partnering with this community infrastructure, PHAs can improve voucher utilization and leverage and align resources so older adults, people with disabilities, and people experiencing homelessness—all priority populations for federal housing assistance—can obtain supportive services needed to attain housing stability, optimize well-being, and avoid homelessness and costly institutional care. Join this session to learn about PHA partnerships with this infrastructure, discuss the dynamics of cross-sector partnerships in community-driven approaches, and discover opportunities available through the Housing and Services Resource Center.

Richard Cho, Senior Advisor for Housing and Services, U.S. Department of Housing and Urban Development (HUD)

Lori Gerhard, Director, Office of Interagency Innovation, Administration for Community Living, HHS

Rishad Mitha, Director of Operations, Housing Authority of the County San Bernardino



EDUCATION & HOUSING TRACK

Room C

Working with School districts and School Data in the Affirmatively Furthering Fair Housing Process

This session will review the extent to which local jurisdictions engaged with school districts in the 2016-17 Affirmatively Furthering Fair Housing (AFFH) process and preview the potential for PHAs to engage with school districts and school data in the upcoming renewal of the HUD AFFH process.

Dr. Andrew J. Greenlee, Associate Professor, University of Illinois Urbana-Champaign

Cashauna Hill, Executive Director, Louisiana Fair Housing Action Center

Natalie Spievack, Master of City Planning Candidate, University of California-Berkeley

Philip Tegeler, Executive Director, Poverty & Race Research Action Council



11:15 am–11:30am

Break

11:30am–11:40am

KEYNOTE

Auditorium

FCC Commissioner Geoffrey Starks

The COVID-19 pandemic has demonstrated what those of us who serve low-income families already knew well: high-speed, reliable internet and devices are crucial for helping families access school, work, health care providers, and other critical needs. Federal Communications Commission (FCC) Commissioner Geoffrey Starks will discuss what the FCC is doing to help advance digital equity, particularly for residents in assisted households, and what PHAs and their partners can do to help low-income families get, and stay, connected to the lifeline that is the internet.

Introduced by Vivian Brady-Phillips, Executive Director, Jersey City Housing Authority

11:40am–12:40pm

PLENARY

Auditorium

Income Supports

Building off discussions during previous Summits, this panel will highlight research and promising practices on cash assistance for low-income individuals and families, including income supports stemming from the pandemic.

Veronica Helms, Social Science Analyst, HUD

Dr. Kilolo Kijakazi, Acting Commissioner, Social Security Administration

David Lloyd, Deputy Chief of Programs, Economic Mobility, Martha's Table, Washington, DC

12:40pm–1:40pm

Lunch

1:40pm–1:45pm

KEYNOTE

Auditorium

Congresswoman Alma Adams

Preceding our plenary on maternal health equity, Congresswoman Alma Adams (D-NC) will give pre-recorded remarks on the importance of aligning sectors to advance racial health equity for mothers and pregnant persons and their babies. Rep. Adams will also highlight her efforts in Congress on this topic, including her co-sponsorship of the Black Maternal Health Omnibus Act of 2021 and her co-leadership of the Black Maternal Health Caucus.

1:45pm–2:45pm

PLENARY

Auditorium

Maternal Health Equity

The Centers for Disease Control and Prevention found that Black women are three times more likely to die from pregnancy related causes than white women. With the majority of PHA residents being Black, Indigenous, or people of color, PHAs understand they play a critical role in addressing racial inequities through increased focus on maternal health. This plenary, announced as part of the Biden-Harris Administration's Maternal Health Call to Action, will discuss the role of PHAs in supporting the health and well-being of their residents.

Plenary Speaker

Dr. Jamila Taylor, Director of Health Care Reform and Senior Fellow, The Century Foundation

Plenary Panel

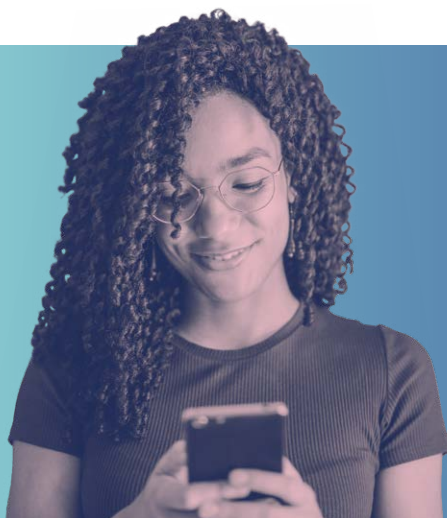
Hannah Katch, Senior Advisor, Centers for Medicare and Medicaid Services, HHS

Catherine Oakar, Special Assistant to the President for Community, Public Health, & Disparities, Executive Office of the President

Ella Santos, Health Initiatives Project Manager, New York City Housing Authority

2:45pm–3:00pm

Break



Engage with us on Twitter!



#HousingIs2022

@Housing_Is

@CLPHA

3:00pm–4:15pm

BREAKOUT SESSIONS: FUNDING



PARTNERSHIPS
TRACK

Auditorium

We Ain't Gonna Program Our Way Out of This, Folks: Investing in Systems Transformation to Improve Economic Mobility

This session will focus on how and why the Ballmer Group is investing in two national intermediaries—StriveTogether and Enterprise Community Partners—in a collaborative approach designed to hold systems accountable for equity and upward mobility outcomes. Panelists will discuss their shared approach to supporting communities in this work, bridging a set of related activities including shared outcomes identification, strategy development and implementation, data collection and continuous process improvement to create the types of transformation in systems that moves power and resources toward equity, upward mobility, and economic wellbeing. Current practices within program delivery emphasize individual behavior of program beneficiaries and participants, and the panelists are focused, rather, on transforming the behavior of systems (and the individuals acting within them).

Josh Davis, Vice President of Policy & Partnerships, StriveTogether

Jeff Edmondson, Executive Director of Community Mobilization,
Ballmer Group

Anna Ravindranath, Senior Program Officer, Enterprise Community Partners



Strengthening
Communities.



Building
Partnerships.



Improving
Lives.



HEALTH &
HOUSING
TRACK

Room A/B

Care Coordination: A Sustainable Approach to Addressing the Social Determinants of Health

The Columbus Metropolitan Housing Authority (CMHA) has formed a partnership with the Healthcare Collaborative of Greater Columbus (HCGC) and their Central Ohio Pathways HUB, to provide supportive services to all 14,000 CMHA-assisted households. HCGC's HUB is a nationally certified program focused on addressing the Social Determinants of Health in an effort to improve health outcomes for at-risk populations. The HUB oversees 10 Care Coordination Agencies (CCAs) and their employed Community Health Workers (CHWs) to provide these services. The HUB contracts with Medicaid Managed Care Organizations, who provide payments to the HUB for services called Pathways delivered to their members.

Jenelle Hoseus, Chief Policy and Partnerships Officer, Health Impact Ohio

Sonja Nelson, Vice President of Resident Initiatives, Columbus
Metropolitan Housing Authority



EDUCATION &
HOUSING
TRACK

Room C

Meeting Families' Needs: Including Child Care in Housing Developments

The Low Income Investment Fund (LIIF) will moderate a unique cross-sector panel of housing and early care and education (ECE) experts on strategies and best practices for co-locating ECE facilities within affordable housing developments. Discussion of specific financing techniques and site design considerations from existing co-located facilities will provide attendees lessons on policy and programmatic changes needed to incentivize co-location. Panelists include innovators in affordable housing development, government and public sectors, early care and education operations, and community development finance.

Joe Fretwell, Program Officer, Low Income Investment Fund

Dr. Yohana Quiroz, Chief Operations Officer, Felton Institute


John Sun, Chief Executive Officer, Pacific Charter School Development

Andrea Bell, Executive Director, Oregon Housing and Community Services

4:15pm–5:15pm

Atrium

Reception

Brought to you by 

THURSDAY, MAY 19

ACTION IN OUR COMMUNITIES

8:30am–9:30am

Breakfast

9:30am–9:45am

Welcome Back Remarks

Auditorium

9:45am– 11:00am

BREAKOUT SESSIONS: RESIDENT-FOCUSED INITIATIVES



PARTNERSHIPS
TRACK

Auditorium

Beyond Books: Deepening Community Impact through Housing Authority and Library Partnerships

When public libraries and public housing authorities intentionally join forces, the benefits are real and lasting for those living in public housing. This session highlights the partnership between Cuyahoga Metropolitan Housing Authority (CMHA) and Cleveland Public Library (CPL). CMHA and CPL executive leaders will discuss how their agencies strategically aligned their vision for impact and are meeting community needs through the library's free and accessible resources. CMHA and CPL leaders will also share strategies for creating effective cross-sector partnerships that can drive greater economic mobility and better education and health outcomes for individuals and families.

Jeffery K. Patterson, Chief Executive Officer,
Cuyahoga Metropolitan Housing Authority

Felton Thomas, Jr., Executive Director, Cleveland Public Library

Tandra T. Turner, Director of Strategic Initiatives, Urban Libraries Council

Building Economic Opportunity Through Health During the Pandemic and Beyond

NYC was an epicenter at the start of the COVID-19 pandemic and the City's population density continues to be a driver of the deep, ongoing public health crisis. As NYC's largest residential landlord, New York City Housing Authority unsurprisingly works with a number of health partners to bring information



HEALTH &
HOUSING
TRACK

Room C



EDUCATION &
HOUSING
TRACK

Room A/B

and services to residents, but the Authority hasn't stopped there. Learn how NYCHA has leveraged partnerships at the intersection of health, housing, and economic opportunity to expand pathways for residents into health training and jobs during the past two years, and what's on the horizon for the next phase of this exciting work.

Shanna Castillo, Senior Director of Resident Economic Empowerment & Sustainability, New York City Housing Authority

Andrea Mata, Director of Health Initiatives, New York City Housing Authority

Carrie Sealy, Program Manager for Harlem Health Advocacy Partners,
New York City Health Department

Designing and Implementing Programs with Residents and Families at the Center

Housing providers are uniquely positioned to find innovative and meaningful ways to engage residents with lived experience in program design and implementation to ensure investments are focused, efficient, and culturally appropriate. Learn how the King County Housing Authority in Washington and The Community Builders in Cincinnati, OH are responding to the needs and desires of their residents in new ways that yield the assets and strengths of their residents to ensure that young children thrive. Attendees will leave this session with new ideas to incorporate resident input in early childhood programming to make it more effective.

Dr. Jodi Cunningham, Director of Health and Housing,

The Community Builders

Dr. Ted Dezember, Senior Manager for Educational Initiatives and Youth Programs, King County Housing Authority

Cara Ianni, Education Programs Coordinator,
King County Housing Authority

11:00am–11:15am

Break

11:15am–12:15pm

PLENARY

Auditorium

Housing as a Platform to Support Early Learning

Public and affordable housing agencies and organizations have the potential to serve as a crucial foundation for promoting early school success for economically challenged, fragile and otherwise marginalized children and families through a 24/7/365 multigenerational system of support and an ability to meet families 'where they are.' During this engaging session, *Housing Is* and our long-time partner The Campaign for Grade-Level Reading

will elevate the critical importance of these housing-education partnerships, with special attention to the way in which such collaborations begin. This plenary will explore initial partnership development work taking place in Kansas City, MO, one of the 20 finalist communities recently announced for the 2022 All-America City Awards. The theme of this year's award is "Housing as a Platform to Promote Early School Success and Equitable Learning Recovery." Attendees have the unique opportunity to hear from a partnership in its earlier stages of development and learn alongside the speakers how critical cross-sector work can be launched.

Dr. Kristin Droege, Executive Director, Turn the Page KC
 Edwin Lowndes, Executive Director, Housing Authority of Kansas City, MO
 Ralph Smith, Managing Director, Campaign for Grade-Level Reading, moderator

12:15pm–1:30pm

Lunch

Atrium

Meeting of the Public and Affordable Housing Professional Summer Learning Community

1:30pm–2:45pm

BREAKOUT SESSIONS: CASE STUDIES



PARTNERSHIPS
TRACK

Room A/B

Bridging the Digital Divide: Advocacy and Public-Private Partnerships

Digital inequity, a national issue intensified by the pandemic, continues to disproportionately impact low-income households, particularly in public housing. With partners, the Jersey City Housing Authority and the Housing Authority of the City of Los Angeles are addressing digital inclusion, including working with Starry to bring high-speed, affordable internet to its residents. Panelists will offer insight into how PHAs can end the digital divide through advocacy and strategic partnerships.

Virginia Lam Abrams, Senior Vice President of Government Affairs & Strategic Advancement, Starry, Inc.

Dina Lehmann-Kim, Housing Revitalization Specialist, HUD

Kurt Peluso, Senior Director of Programs and Partnerships, EveryoneOn

Allison Strobel, Chief of Staff and Director of Resident Empowerment and Community Engagement, Jersey City Housing Authority

Jennifer Thomas-Arthurs, Assistant Director, Housing Authority of the City of Los Angeles



HEALTH &
HOUSING
TRACK

Auditorium

Learnings from Cross-Sector Partnerships to Expand Supportive Housing

The Vancouver Housing Authority collaborated with a Federally Qualified Health Center and a homeless crisis response system to develop a network of scattered-site and site-based supportive housing. This moderated panel discussion will cover how VHA paired Housing Choice Vouchers and public housing with a Medicaid funded supportive housing benefit to serve people identified by the community's Coordinated Entry as needing supportive housing. Speakers will also discuss the challenges faced through the process, model adjustments made, and evaluation of the work through matching housing data with Medicaid utilization data.

Melissa Baker, Coordinated Entry Director, Council for the Homeless

Hannah Cohen-Cline, Program Director of Research & Evaluation, Center for Outcomes Research and Education

Kit Kuran, Supportive Services Manager, Vancouver Housing Authority

Jeni O'Neil, Behavioral Health Program Manager, Sea Mar Community Health Centers

Andy Silver, Chief Operations Officer, Vancouver Housing Authority



EDUCATION &
HOUSING
TRACK

Room C

Taking FSS to Scale: Lessons from Compass' Partnerships in Boston and Cambridge

This panel discussion will examine the results of efforts to significantly expand the reach of HUD's Family Self Sufficiency Program through partnerships between the nonprofit Compass Working Capital and the Boston and Cambridge Housing Authorities. Panelists will discuss their program model and its evaluation, how they have scaled up FSS, what results they have experienced to date, and where they plan to go from here. An FSS program participant will participate in the panel and share their perspective on how the program has benefitted them.

Adria Crutchfield, Executive Director, Baltimore Regional Housing Partnership

David Gleich, Chief Officer of Leased Housing and Admissions, Boston Housing Authority

Zach Gordon, Senior Program Manager of Policy and Administration, Cambridge Housing Authority

Simone Lopes, Client Advisory Board Member, Compass Working Capital

Jeffrey Lubell, Director of Housing and Community Initiatives, Abt Associates

Markita Morris-Louis, Chief Executive Officer, Compass Working Capital

2:45pm–3pm

Auditorium

CLPHA Closing Remarks





BREAKOUT SESSIONS ROADMAP

The *Housing Is* Summit offers programming focused on key sectors health and education, as well as sessions focused on general partnership.



HOUSING IS HEALTH

These four sessions focus primarily on intersections between housing and health.

- WEDNESDAY MAY 18** Realizing Housing Stability: Partnership Opportunities with the Disability and Aging Networks
10:00am-11:15am | Room A/B
- Care Coordination: A Sustainable Approach to Addressing the Social Determinants of Health
3:00pm-4:15pm | Room A/B
- THURSDAY MAY 19** Building Economic Opportunity Through Health During the Pandemic and Beyond
9:45am-11:00am | Room C
- Learnings from Cross-Sector Partnership to Expand Supportive Housing
1:30pm-2:45pm | Auditorium



HOUSING IS EDUCATION

These four sessions focus primarily on intersections between housing and education.

- WEDNESDAY MAY 18** Working with School Districts and School Data in the Affirmatively Furthering Fair Housing Process
10:00am-11:15am | Room C
- Meeting Families' Needs: Including Child Care in Housing Developments
3:00pm-4:15pm | Room C
- THURSDAY MAY 19** Designing and Implementing Programs with Residents and Families at the Center
9:45am-11:00am | Room A/B
- Taking FSS to Scale: Lessons from Compass' Partnerships in Boston and Cambridge"
1:30pm-2:45pm | Room C



HOUSING IS PARTNERSHIP

These four sessions focus primarily on how partnerships help advance cross-sector work.

- WEDNESDAY MAY 18** PHA Partnerships Improving Communities and Public Safety
10:00am-11:15am | Auditorium
- We Ain't Gonna Program Our Way Out of This, Folks: Investing in Systems Transformation to Improve Economic Mobility
3:00pm-4:15pm | Auditorium
- THURSDAY MAY 19** Beyond Books: Deepening Community Impact through Housing Authority and Library Partnerships
9:45am-11:00am | Auditorium
- Bridging the Digital Divide: Advocacy and Public-Private Partnerships
1:30pm-2:45pm | Room A/B



#HousingIs2022

clpha.org | housingis.org | [@clpha](https://twitter.com/clpha) | [@housing_is](https://twitter.com/housing_is)

The *Housing Is* Initiative, led by the Council of Large Public Housing Authorities, helps build a future where systems work together to improve life outcomes. This is our 8th annual *Housing Is* Summit, the preeminent event dedicated to collaboration among the housing, education, and health sectors.

<https://clpha.org/housing-summit>

