

Cross System Partnerships to Improve Outcomes

Kristy Johnson

Interim Senior Director

Policy, Research and Social Impact



Cassandra Jackson, M.Ed., LMHC, MHP

South Region Director





Mission
As a national leader in affordable housing, King County Housing Authority serves to provide innovative, effective, and equitable housing solutions so that all people and communities can prosper



King County
Housing
Authority

We transform lives through housing

Affordable Housing Portfolio

| Portfolio | Number Served |
|---|---------------|
| KCHA Owned and Managed Subsidized Units | 4,280 |
| Housing Choice Voucher (HCV) Program | 10,000 |
| KCHA Owned Workforce Housing Units (Low-income Housing Tax Credits/Bond) | 7,300 |
| Total | 21,580 |

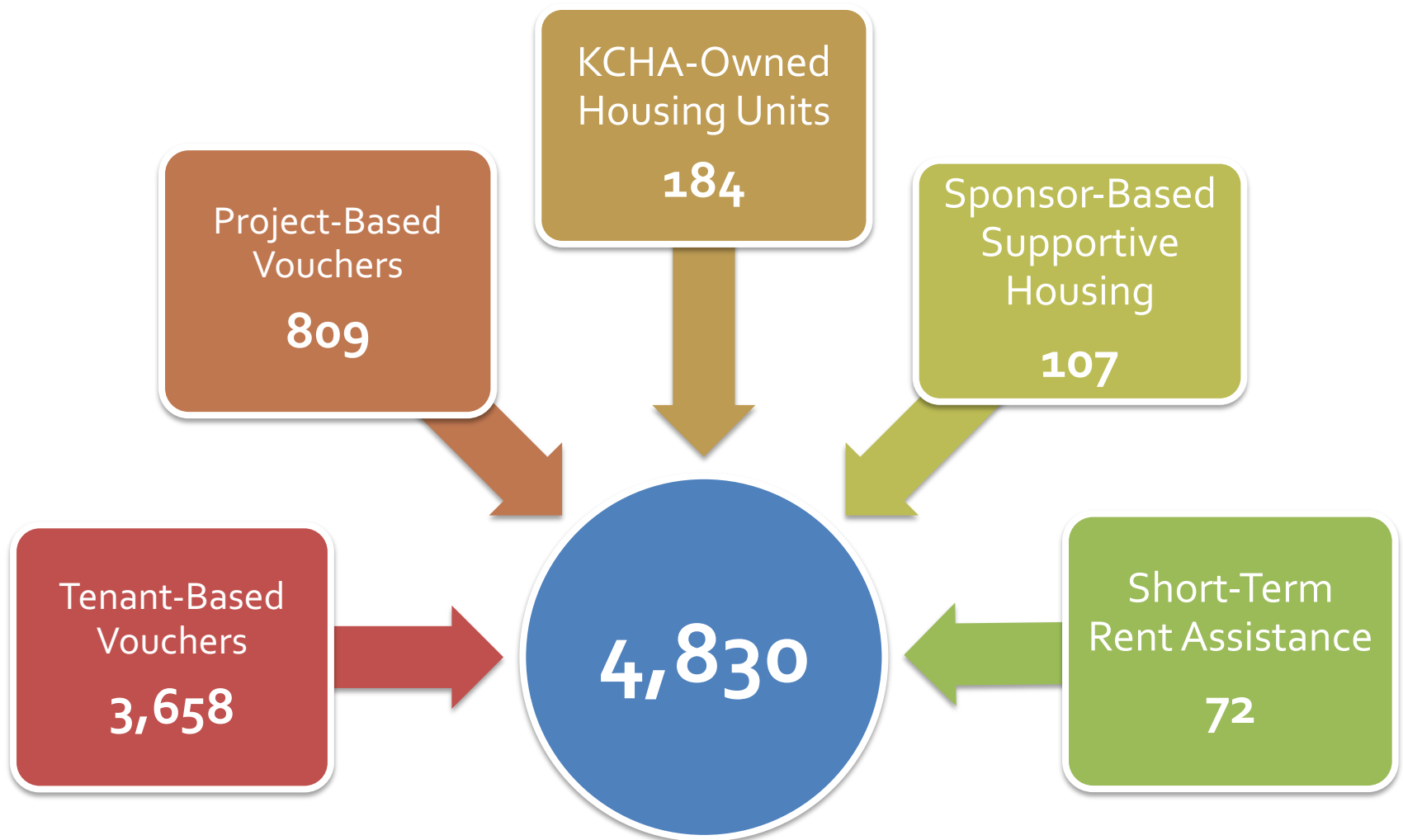
Organizational Strategy

Coordinate closely with the behavioral healthcare and homeless systems to increase the supply of service enriched housing for people experiencing homelessness or who have special needs.

Organizational Strategies

- Homeless Preference
- Low Barrier Admissions
- Apply for New Housing Choice Vouchers
- MTW Flexibilities to Design and Test New Approaches
- Move-on Strategies from Service Enriched Programs
- Acquisition to Preserve Affordability in King County
- Partnerships

Service Enriched Housing Portfolio





- Founded in 1966
- King County's largest and most comprehensive behavioral health service provider
- Commission on Accreditation of Rehabilitation Facilities (CARF) 2008
- \$81.5 Million Annual Budget
- 650 Employees

Mission

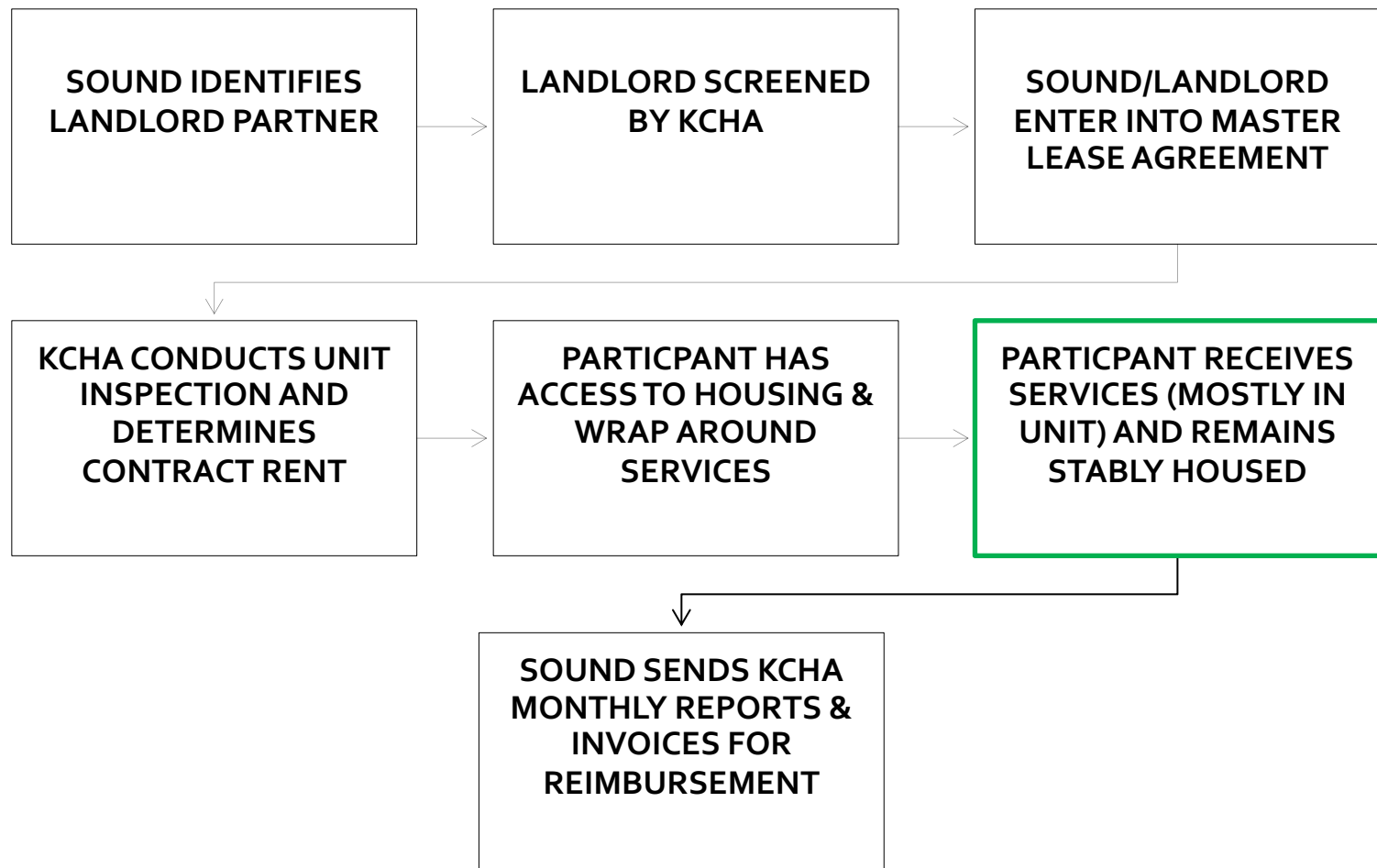
To strengthen our community and improve the lives of our clients by delivering excellent health and human services tailored to meet their needs.



- **Behavioral Health Services**
(inclusive of mental health and substance use disorder)
- **Specialty Behavioral Health Services**
(Deaf/Hard of Hearing, Intellectual/Developmental Disabilities, Forensic)
- **Telehealth Services**
- **Youth & Children Behavioral Health and Substance Use Services**
- **Family Oriented Services** (Domestic Violence, Family Counseling)
- **Residential Treatment**
- **Supported Housing** (units owned by Sound)

Housing First Program

45 Sponsor-based Supportive Housing subsidies
Targeting people experiencing chronic homelessness



The Willows

Target Population

- Mothers/caregivers exiting inpatient substance use treatment, reuniting with their children
- Referrals come from: King County Family Treatment Court, and inpatient SUD treatment programs



Housing Model

- Owned by Sound and subsidized by KCHA's Project-based Vouchers
- Low barrier admission
- 15 Bedrooms + baths that configure to create a family pod with shared common areas
- Transitional Housing

Key Considerations



Partnerships



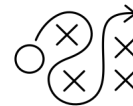
Target Resources



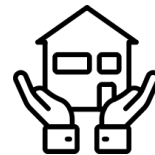
Housing First Approach



Support Services



Flexibility



Housing Stability

Thank You!



Kristy Johnson

Interim Senior Director of Policy,
Research & Social Impact

www.KCHA.org

KristyJ@KCHA.org

206-574-1357



Cassandra Jackson, M.Ed., LMHC, MHP

South Region Director

www.Sound.Health

Cassandra.Jackson@Sound.Health

Phone: 253-876-7660